



TR50210 | Telescopic Handlers



Performance

Lifting height — on stabilisers	20500.0 mm
Lifting height — on tyres	20300.0 mm
Rated capacity	5000 kg
Capacity (at max. height on stabilisers)	2500 kg
Capacity (at max. height on tyres)	1200 kg
Capacity (at max. reach on stabilisers)	400 kg
Capacity (at max. reach on tyres)	400 kg
Max. reach on stabilisers	18100.0 mm
Max. reach on tyres	12700.0 mm

Weights

Weight (unladen)	17200 kg
------------------	----------

Traction

Standard tyres	18 — R22.5in
Standard tyres	18 — R22.5in
Low speed (forward/reverse)	10.0 km/h
High speed (forward/reverse)	40.0 km/h

Drive System

Main drive	2-speed gear box
Transmission	Hydrostatic with hydraulic regulation

Engine

Make/Model	PERKINS / 1104D-ETA
Fuel	Diesel
Cooling	Liquid
Rated power (DIN 6271) at 2200 RPM	106.0 kW
Maximum torque at 1400 RPM	556.0 Nm
Number of cylinders	4
Displacement	4.40 L

Hydraulic System

Pump type	Double gear pump
Working pressure	230.00 bar

Cycle Times

Lift time — no load	18.0 s
Lower time — no load	13.0 s
Telescope in time at max. reach — no load	21.0 s
Telescope in time at max. height — no load	16.0 s
Telescope out time at max. reach — no load	28.0 s
Telescope out time at max. height — no load	27.0 s

Brakes

Engine braking	Hydrostatic
Parking brake	Negative brake with electro-hydraulic command on rear axle

Fluid Capacities

Axles and reduction gears front / rear	10.0/10.0 L
Engine oil	9.00 L
Fuel tank	180.00 L
Hydraulic reservoir	270.00 L

Standard Features

Man platform ready	Heating, demisting and ventilation
Hydrostatic transmission	Carriage with manual attachment lock
Two way hydraulic supply at the end of the boom	ROPS/FOPS operator cab
Back-up alarm	Front and rear washer/wipers
Boom stop	Suspension seat
Lockable fuel cap	Road lights
Rotating beacon	

Options

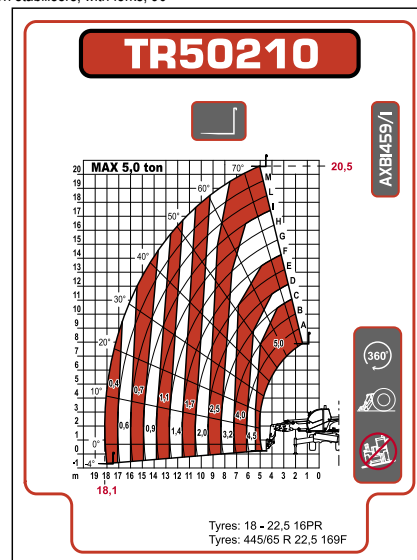
Custom colour	Remote control
Pneumatic seat (compulsory with double joystick)	Second auxiliary hydraulic line with electrical line
Air conditioning	Stabilizer security 30 degrees
Windscreen grill	Sun visor
Anti-theft immobiliser	TÜV homologation
Auto-cleaning air prefilter	Work light on top of cabin
Centering handler and positive/negative jib pre-arrangement	2-speed accelerator adjustment for remote control
Cold weather kit	Boom light
Controls with double joystick	Carriage with hydraulic attachment lock
Electric contact on boom head	Catalytic purifier muffler
Limited slip differential for rear axle	Cold start
Pallet fork transversal block	Electronic accelerator adjustment for remote control
Radio	Webasto heater (Cold weather kit is compulsory)
Radio with CD player	Spare wheel

Environmental

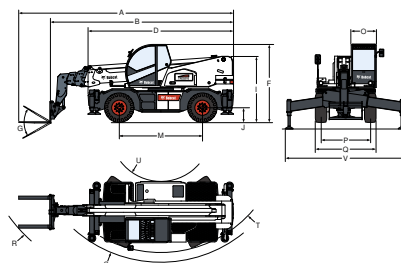
Level of acoustic power (LWA)	104 dB(A)
Whole body vibration (EN 13059)	1.50 ms ⁻²
Hand-arm vibration (EN 13059)	4.50 ms ⁻²

Load Charts

On stabilisers, with forks, 90°



Dimensions



(A)	8360.0 mm	(O)	980.0 mm
(B)	7150.0 mm	(P)	1920.0 mm
(D)	5680.0 mm	(Q)	2380.0 mm
(F)	3030.0 mm	(R)	6720.0 mm
(G)	134°	(S)	5130.0 mm
(I)	2580.0 mm	(T)	4750.0 mm
(J)	320.0 mm	(U)	1980.0 mm
(M)	3250.0 mm	(V)	4710.0 mm

Specifications and design are subject to change without notice. Pictures of Bobcat products may show other than standard equipment.



www.bobcat.eu